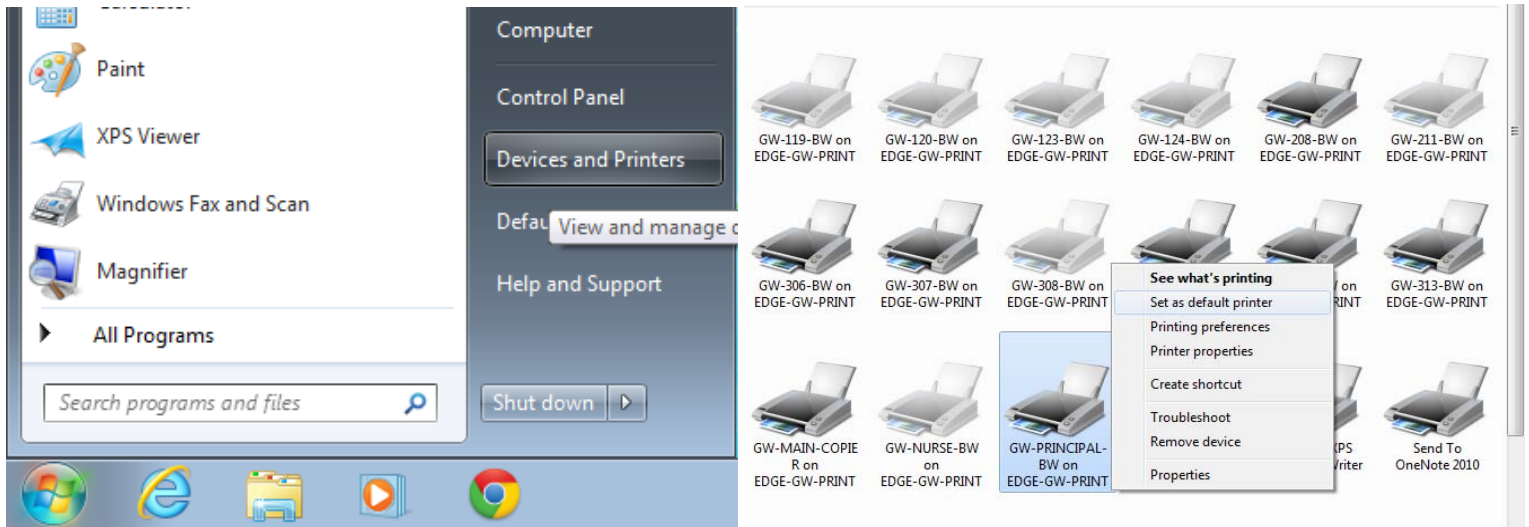


Setting default printer – Once logged in to the PC, click on the start button and select devices and printers. Right-click on the appropriate printer and select set as default. Printing from any program will default to this printer. When printing to a specific printer, please make sure the correct one is selected. Printers are labeled by school<room><type (color or b&w). To print to GW room 318, select the printer “GW-318-BW”. EVG does not have a printer in every classroom. On EVG’s list of printers, there are some shared network printers available per floor.



Printer Name	Queue Status	Jobs In ...	Server Name
EVG-012-CLR	Toner/Ink Low	0	edge-evg-print
EVG-017-BW	Offline	0	edge-evg-print
EVG-102-CLR	Ready	0	edge-evg-print
EVG-110-BW	Offline	0	edge-evg-print
EVG-114-BW	Ready	0	edge-evg-print
EVG-203-CLR	Ready	0	edge-evg-print
EVG-212-BW	Offline	0	edge-evg-print
EVG-217-BW	Ready	0	edge-evg-print
EVG-BUSOFF-CLR	Ready	0	edge-evg-print
EVG-BUSOFF-COPIER	Ready	0	edge-evg-print
EVG-LIB-BW	Toner/Ink Low	0	edge-evg-print
EVG-LIB-CANDY	No Toner/Ink	1	edge-evg-print
EVG-LIB-POSTER	Paused - Offline	1	edge-evg-print
EVG-MAIN-CLR	Ready	0	edge-evg-print
EVG-NURSE-BW	Ready	0	edge-evg-print
EVG-PRINCIPAL-BW	Ready	0	edge-evg-print