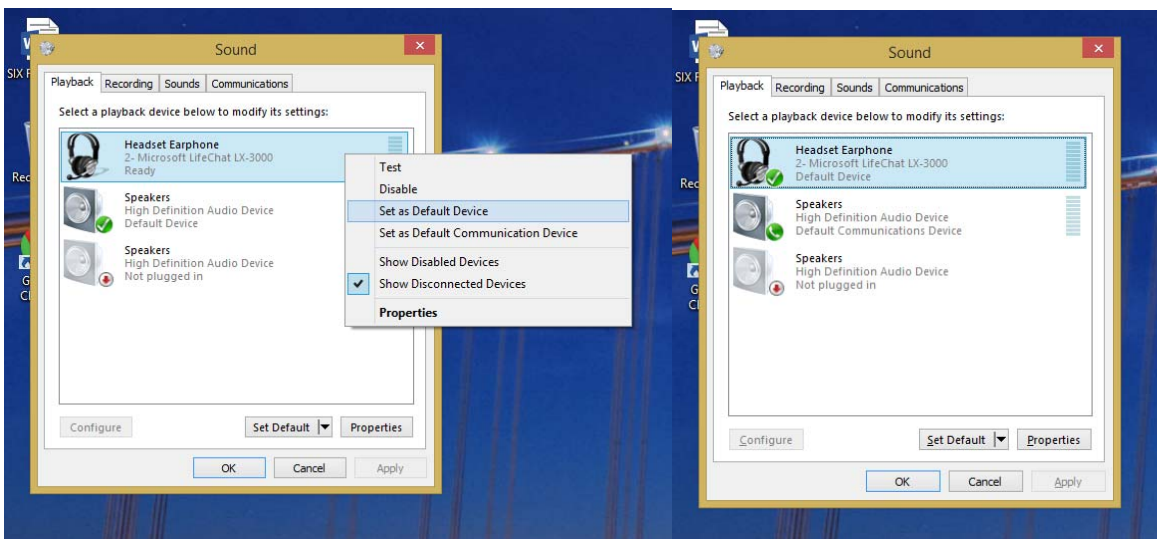


To make sure the Microsoft Lifechat headset is the default audio and microphone device, please do the following after connecting the headset:

- Hover the mouse pointer over the sound icon, right click and select **playback devices** to access the sound settings.



- In the ensuing window, right click over the Headset Earphone icon and select **set as default device**. Once it is set as the default output device, a green check mark will appear on the headset icon.



- In the event that microphones will be used, access the sound settings by right clicking over the sound icon then select recording devices.



- In the ensuing window, right click over the Headset Microphone and select "set as default device". Once it is set as the default input device, a green check mark will appear over the headset icon.

